

(Please print this out and bring to class for further recommendations)

Supply List:

Increase Your Speed + Capture the Color in Oil

David Tanner

Plaza Art

927 W Grace St, Richmond, VA 23220

(804) 359-5900

www.plazaart.com

*Buying from the nice folks at **Plaza Art** will make your life a lot easier. Don't count on staff at craft stores like Michael's to be able to answer any questions; Plaza's staff will have great suggestions for alternatives if certain items are out of stock.*

We'll talk about materials & the reasons behind my suggestions during the first class, but do try to have the materials *before* our first class!

BRUSHES

8 Brushes Total, plus a toning brush (see attached photo)

We will use **filberts & flats** (these describe brush shape) made from **bristle** and **synthetic** with long handles. *

Bristle Filberts: Please have brand new Robert Simmons "Signet" long-handled bristle #42 filberts, size 2, 4, & 6 (one each). *Alternative: Plaza Georgetown Chunking Bristle*

Bristle Flats: Please have brand new Robert Simmons "Signet" long-handled bristle #40 F flats, size 4 & 6 (one each). *Alternative: Plaza Georgetown Chunking Bristle*

Synthetic Filbert: Please have one brand new Filbert 6 Grey Matters Synthetic Brush by Jack Richeson. *Note: This is labeled as an acrylic brush, but works for oils too.*

Synthetic Flat: Please have one brand new Flat 6 Grey Matters Synthetic Brush by Jack Richeson. *Note: This is labeled as an acrylic brush, but works for oils too.*

Fan: Please have one brand new Size 2 Plaza "Montgomery" long handled fan brush

Palette Knife: RGM Plus Palette Knife #41 (should say "Italy" on handle).

Wipe-Out Tool: An Art Alternatives product, with rubber tip for wiping out small areas of paint.

Toning Brush: Have a single gesso brush, or an inexpensive 2-inch chip brush, the kind you'd find in a hardware store.

CANVAS PANELS

We will be painting two studies each week, with each painting limited to approximately one hour, so you will need **two canvas panels each week**. Or you could put two studies on one panel. Many weeks, when I'm painting along with you guys, I put my two studies on a single 9x12" canvas panel.

My recommendation is to have canvas panels that are **8x10"** or **9x12"**. It's not a bad idea to keep some extra panels in your car. Plaza has economical multi-packs of these in the Art Alternative brand.

**unless you have been in my class on a regular basis, I would not recommend working larger than 11x14"*

PAINT THINNERS/MEDIUMS

Gamblin Odorless Mineral Spirits (OMS) 16 oz. will be our thinner/solvent. Turpenoid is fine too, in the blue & white container.

Gamblin Galkyd Lite 2 fl. oz. is a suggested oil painting medium, as you will notice it increases drying time during a short painting session.

Turpentine or mineral spirits found in hardware stores are not allowed in the classroom!

OIL PAINT

15 tubes total

We will be using a great deal of paint; if you are squeamish about squeezing out a lot, I would recommend Gamblin's economical yet dependable **"Gamblin 1980"** oil. For the white, definitely get the 150 ml. tube, the rest can be 37 ml. to start, you can always buy a larger tube later.

Alternative: Plaza House Brand or Winton

*(If you already own these colors in other brands, you do **not** need to buy replacements. Your existing tube in another brand is probably fine. We can determine that in class).*

Alizarin Crimson

Quinacridone Red (aka Permanent Rose)

Cadmium Red Light

Cadmium Orange

Indian Yellow

Yellow Ochre

Cadmium Yellow Light

Sap Green

Phthalo Green (if not Gamblin, make sure tube indicates a blue/green shade, **not** yellow/green)

Phthalo Blue **OR** Cerulean Blue Hue

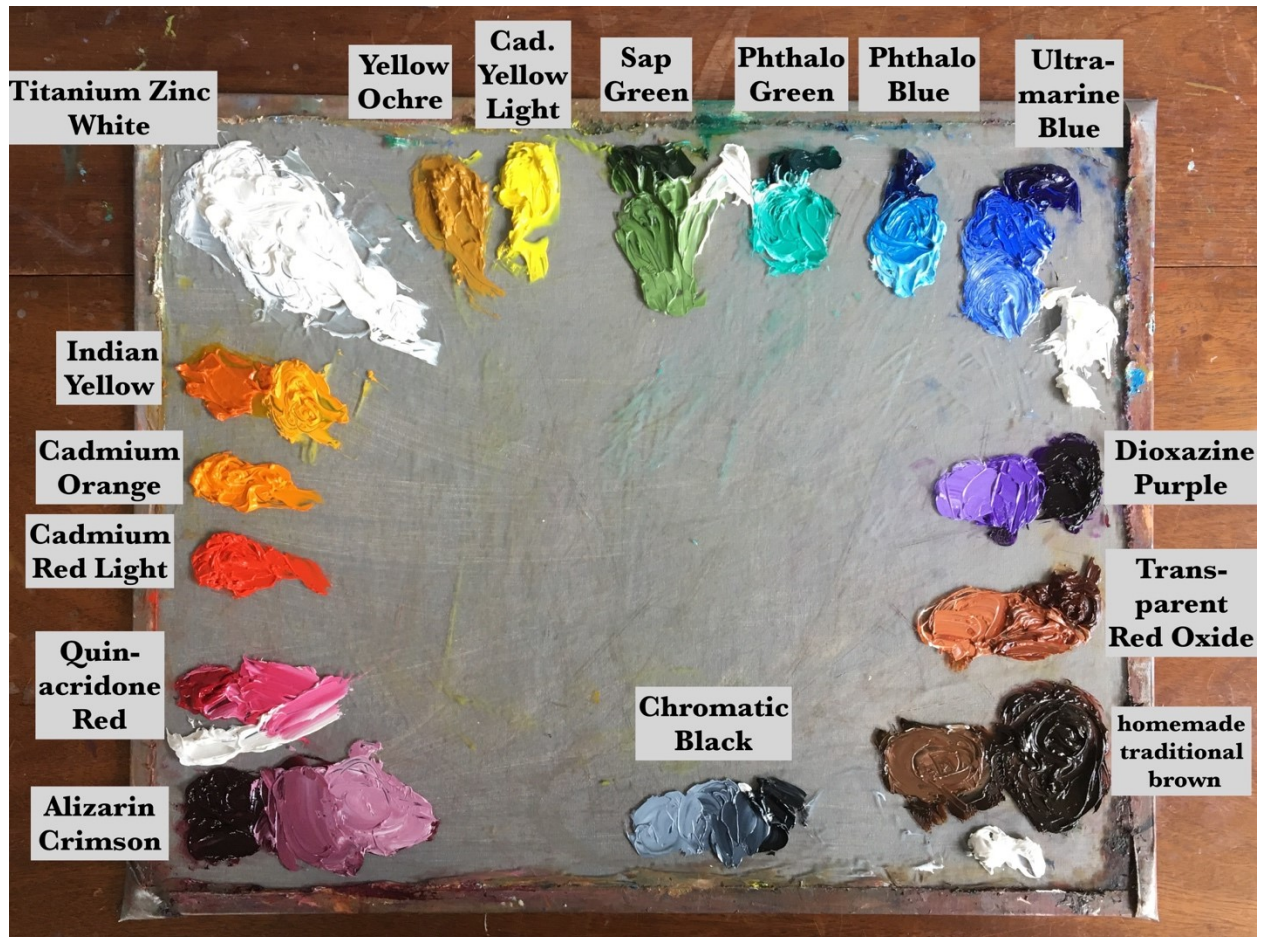
Ultramarine Blue

Dioxazine Purple **OR** Quinacridone Violet

Transparent Oxide Red (Gamblin 1980 only) **OR** Burnt Sienna

Ivory Black **OR** Chromatic Black
Titanium Zinc White **OR** Titanium White

Here's my typical palette layout. These are the colors I use for all my work....figures, portraits, landscapes, and still-life. Remember to squeeze out your tubes toward the edge of the palette, and reserve the middle for color mixing and experimentation. Scrape the middle clean as often as needed as you run out of mixing space.



Palette

Masterson Palette Seal (a blue-lidded palette box) 12"x16".

Glass palette to drop inside of box, 12"x16" (Plaza will cut & safely border this with duct tape for you) and a 12x16 piece of gray illustration or mat board for underneath the glass.

Also, have a razor blade **paint-scraper** to clean glass of unusable paint residue. * See attached photo

Holder for Mediums

I like the lidded “Twisterz” brand palette cup from Plaza. Get two. One used for medium, the other for thinner.

Or, the IMF 2 oz. double wall plastic jars * **Please, no glass jars for thinners and mediums!**

* see attached photo

Toning the Canvas (see attached YouTube video for toning demo)

Please have a tube of “Golden Acrylic #6 Neutral Gray” acrylic paint. I suggest acrylic for toning due to the speed of drying. *Alternatives—Plaza Acrylic Neutral Gray #1553, or Liquitex Basics Neutral Gray #5.*

PAPER TOWELS

I recommend **Viva Paper Towels** (standard surface, no texture) to use as paint rags. You’ll need to go to a supermarket or Target for these.

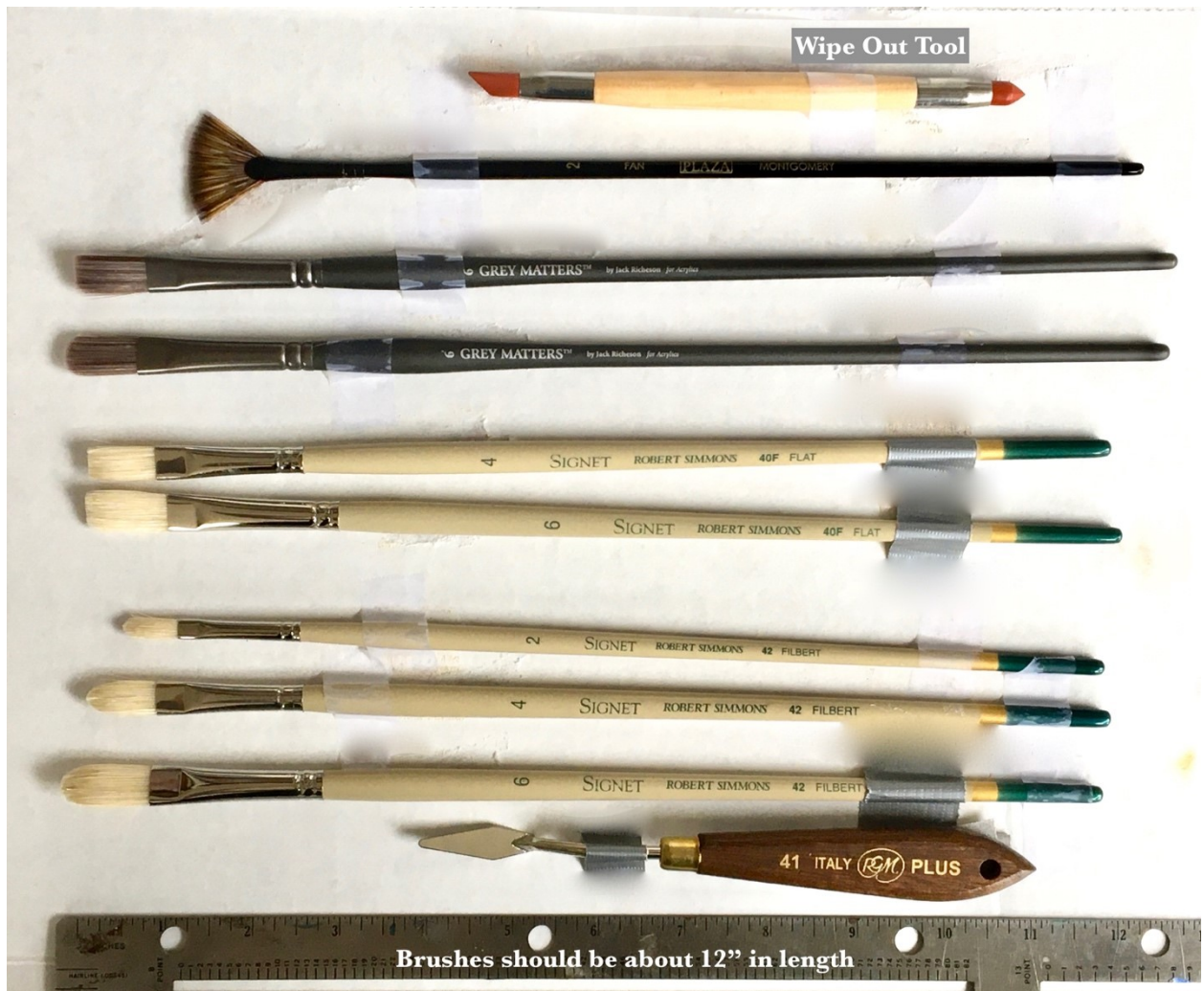
MISCELLANEOUS: Bring a **camera**, a small **sketchpad**, and a **pencil** and **eraser** for note taking.

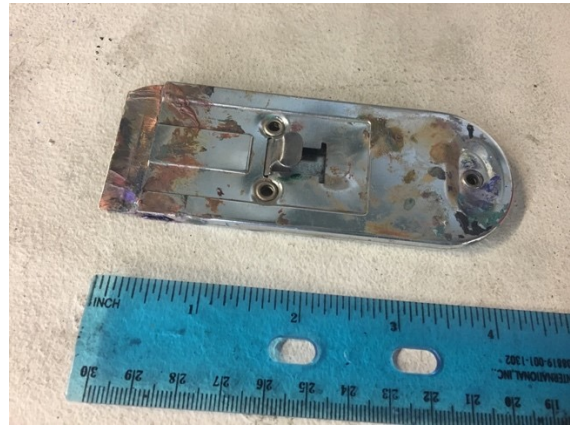
An empty **pizza box** is a **good way to transport a wet canvas** home without dirtying your hands or car interior. Raymar makes lightweight, slotted canvas panel carriers, can be found at www.raymarart.com. I’m also told that the company call Guerrilla Painter makes a similar, less expensive version.

Suggested Reading: The Artist Magazine, Plein-Air Magazine, and International Artist Magazine. These publications feature articles on both contemporary and historical painters working in the representational traditions we will be studying in class.

Books: *Fill Your Oil Paintings With Light & Color* by Kevin Macpherson
Alla Prima: Everything I Know About Painting by Richard Schmid

Questions? Get in touch thru the contact link on my website: www.DavidTannerFineArt.com or david@davidtannerfineart.com





YouTube Videos

I've made some very short explanatory videos you may find helpful. Click the links below.

Use the toning video so you can prepare a couple of canvas boards before the first class.

[Toning Your Canvas](#)

[Color Preparation & Mixing](#)

[Cleaning Your Brushes](#)

If these links don't work, visit my website www.DavidTannerFineArt.com. On the menu click **About**, and then click **Teaching**. You'll find these videos, the supply list, and a class description.